

P.O. \_\_\_\_\_ Date: \_\_\_\_\_  
 Contact name: \_\_\_\_\_  
 Company / Address: \_\_\_\_\_  
 Phone: \_\_\_\_\_ Fax: \_\_\_\_\_  
 Email: \_\_\_\_\_

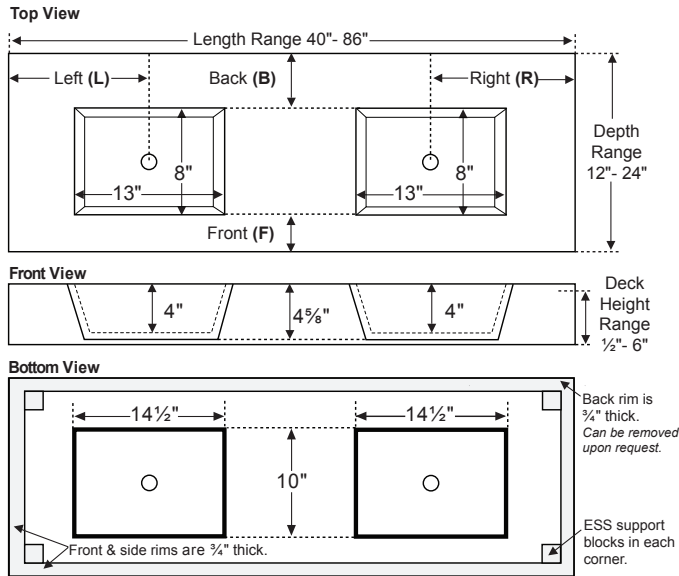
# Petra Counter-Sink 9

## Double Bowl

### Worksheet & Order Form

MTI Order Entry Department  
 Phone: 800-783-8827 Fax: 800-438-8827  
 Email: orderentry@mtibaths.com

### Worksheet



NOTE: Corner support blocks shown in above 'bottom view' are necessary only when deck height is over 1". All four sides will be finished standard, unless requested otherwise.  
**Important: Due to the handcrafted nature of this product, please allow for a tolerance of up to 1/4" for overall dimensions and 1/2" for bowl placement.**

### Countertop Measurements - including overhang\*

\_\_\_\_\_ Length \_\_\_\_\_ Depth \_\_\_\_\_ Deck Height

\* Add a minimum overhang of 1/4" to length & depth, to ensure full coverage of any exposed side of the vanity. Additional overhang may be required depending on installation application or wall variances.

### Bowl Placement Measurements

Length - Enter measurements from Left (L) AND Right (R).

\_\_\_\_\_ inches (L) from left edge of top to center of bowl.

AND

\_\_\_\_\_ inches (R) from right edge of top to center of bowl.

Depth - Enter a measurement from Back (B) OR Front (F).

\_\_\_\_\_ inches (B) from back edge of top to back edge of bowl.

OR

\_\_\_\_\_ inches (F) from front edge of top to front edge of bowl.

Installation Type - Choose one:

\_\_\_\_\_ Vanity Mount OR \_\_\_\_\_ Wall Mount

Faucet Application - Choose one:

\_\_\_\_\_ Deck Mount OR \_\_\_\_\_ Wall Mount

### Order Form - See local MTI dealer for pricing.

Counter-Sink Size - Choose one of the following and enter price:				
Length	Depth	Finish	Part #	Price
40" up to 50"	12" up to 24"	Matte	C809-D50MT	
		Gloss	C809-D50GL	
> 50" up to 62"	12" up to 24"	Matte	C809-D62MT	
		Gloss	C809-D62GL	
> 62" up to 74"	12" up to 24"	Matte	C809-D74MT	
		Gloss	C809-D74GL	
> 75" up to 86"	12" up to 24"	Matte	C809-D86MT	
		Gloss	C809-D86GL	

Required Additional Information		Part #	Price
Choose one from each group and enter price:			
Colors	White	CWH	no charge
	Biscuit	CBI	no charge
Deck Height	1/2"	CDH1	no charge
	> 1/2" up to 2 7/8"	CDH2	
	3" up to 6"	CDH3	
Integrated Overflow	None	CION	no charge
	Front bowl installation	CIOF	
	Back bowl installation	CIOB	
Faucet Holes <small>(drilled 1-3/8" in diameter.)</small>	None	CFHN	no charge
	Up to 6	CFH	

Faucet Hole drilling instructions:

Counter-Sink Options		Part #	Price
Backsplash 4" (H) x 5/8" thick	Length up to 50"	CBSM	
	Length 51" up to 86"	CBLG	
Sidesplash 4" (H) x 5/8" thick	Left	CSL	
	Right	CSR	
Edge Treatments	Please specify: Cove (1), Roundover (2), or Roman Ogee (3)	CET_	
Carrier Arms for wall-mounting	Two	CCA2	
	Three	CCA3	
Teak Sink Tray - for toiletries & accessories		CTKST	
Drain Kit - enter specific part # and price from dealer price sheet			

### IMPORTANT CONSTRUCTION AND OPTIONS INFORMATION:

- Carefully review inside vanity specifications to ensure that there is proper clearance to accommodate the bowl, drain and optional integrated overflow, if applicable.
- Please take into consideration the thickness of material under the countertop when positioning sink bowl, using a deck-mounted faucet or adding an integrated overflow. See "bottom view" drawing above.
- Outside of overflow housing protrudes approx. 1/2" from the bowl and may impact bowl placement.
- Please submit a copy of vanity specifications with order to ensure proper fit and finish of Counter-Sink.**
- See back of this worksheet for additional construction & options info.

Distributor Signature \_\_\_\_\_



**Additional construction and options information:**

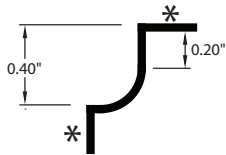
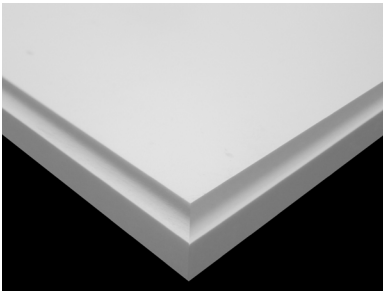
**Edge Treatments** - routed edges provide tasteful detail to further integrate with other design elements in the room.

*If gloss finish is selected, it will only apply to the sink bowl, top, and vertical surface of the Counter-Sink.*

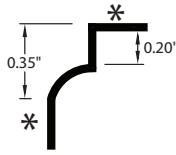
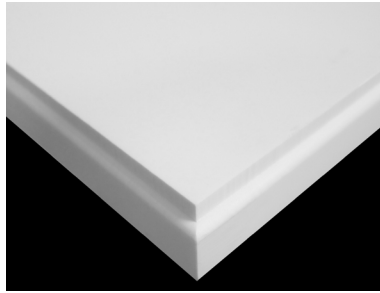
*The detail area will remain in a matte finish as denoted by the (\*) in the diagrams below.*

*A 1" minimum counter thickness is required for edge treatments.*

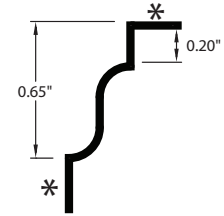
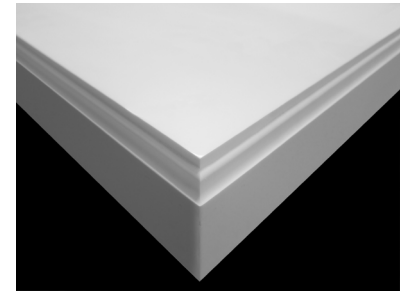
**Cove Edge**  
part# CET1



**Roundover Edge**  
part# CET2



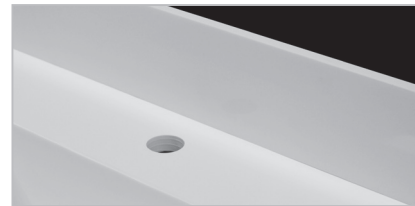
**Roman Ogee Edge**  
part# CET3



**Integrated overflow** can be installed on either the inside front or back wall of sink. *Note: Outside of overflow housing protrudes approx. 1/2" from the bowl and may impact bowl placement.*



**Backsplash / Sidesplash** - measures 4" (H) and 5/8" thick. Field-installed on finished surface of countertop. *Consider bowl placement and/or faucets when ordering.*

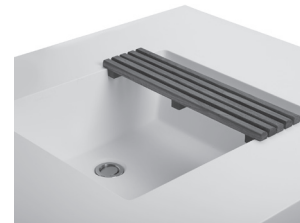


**Overhang** is material that extends over the front and/or sides of vanity.

*Add a minimum overhang of 1/4" to length & depth, to ensure full coverage of any exposed side of the vanity. Additional overhang may be required depending on installation application or wall variances.*



**Teak Sink Tray** is an ideal Counter-Sink accessory, hand crafted to fit rectangular bowls. Both stylish and practical, the MTI teak sink tray can be used as a resting place for grooming articles and toiletries. Flat slatted teak design lets water and soap run through, so there is no residue build-up.



**Carrier Arms** are offered for wall-mount installation applications. Counter-Sink can be secured to each carrier arm using 3M construction adhesive (not supplied) for most installation applications. Check local codes.

**NOTE: carrier arms must be specified on order to ensure proper fit. MTI recommends two carrier arms for most single bowl applications, although three might be necessary for Counter-Sinks 60" and up with an offset bowl.**

