

Worksheet and order form must be filled out by an authorized MTI dealer.

# Petra Vanity Sink 9

## Worksheet - Double Bowl

Send this completed worksheet,  
along with order form and purchase order to:

MTI Order Entry Department  
Phone: 800-783-8827 Fax: 800-438-8827  
Email: orderentry@mtibaths.com

Please fill in the information below:

P.O. \_\_\_\_\_ Date: \_\_\_\_\_

Contact name: \_\_\_\_\_

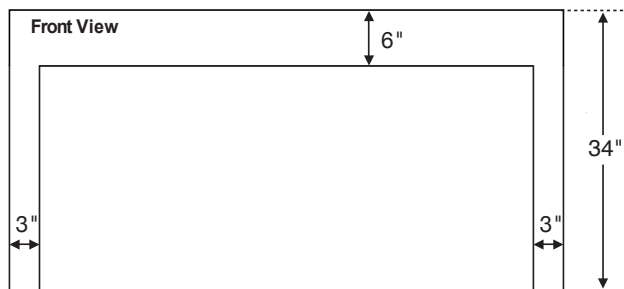
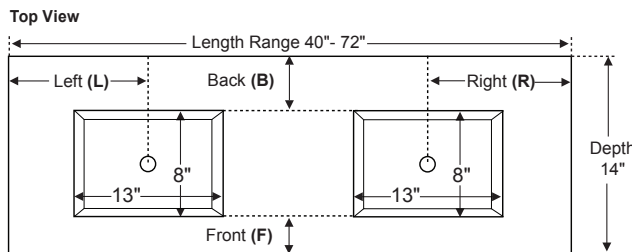
Company / Address: \_\_\_\_\_

Phone: \_\_\_\_\_ Fax: \_\_\_\_\_

Email: \_\_\_\_\_

### Worksheet Instructions:

- Vanity Sink is available in 5 standard lengths ranging between 48" and 72". Enter exact size below. Custom lengths are not available.
- Overall height (34") and depth (14") are fixed and not customizable.
- Select whether faucet will be deck-mounted or wall-mounted.
- NOTE: due to the 14" depth of this vanity, MTI recommends wall-mount faucets.*
- For bowl placement, simply check "Standard bowl placement" if using MTI's standard, recommended bowl placement shown in the drawings on next page. For custom, enter specific bowl placement measurements for length and depth.
- Send this worksheet, along with order form and purchase order to the MTI order entry department.



**Note: Due to the handcrafted nature of this product, please allow for a tolerance of up to 1/4" for overall dimensions and 1/2" for bowl placement.**

### Vanity Length *Enter a size listed below:*

\_\_\_\_\_ Choose from 48", 54", 60", 66" or 72".

### Faucet Application *Choose one of the following:*

\_\_\_\_\_ Deck-Mount **OR** \_\_\_\_\_ Wall-Mount

*NOTE: due to the depth of this vanity, MTI recommends wall-mount faucets.*

### Bowl Placement Measurements

**Length** - Choose 'Standard' **OR** enter measurements for Left (L) **AND** Right (R).

\_\_\_\_\_ **Standard bowl placement. See drawings on next page.**

**OR**

\_\_\_\_\_ inches (L) from left edge of vanity to center of bowl.

**AND**

\_\_\_\_\_ inches (R) from right edge of vanity to center of bowl.

**Depth** - Choose 'Standard' or enter a measurement from Back (B) **OR** Front (F).

\_\_\_\_\_ **Standard bowl placement for deck-mount faucets.**

*See drawings on next page.*

**OR**

\_\_\_\_\_ inches (B) from back edge of top to back edge of bowl.

**OR**

\_\_\_\_\_ inches (F) from front edge of top to front edge of bowl.

Distributor Signature \_\_\_\_\_

Model # MTCS-V809

Effective 052316

©2016 by MTI Baths, Inc. Modification Rights Reserved.



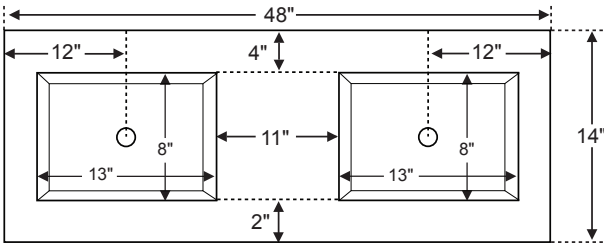
# Petra Vanity Sink 9

Recommended bowl placement  
for sizes 48" - 72" (L)

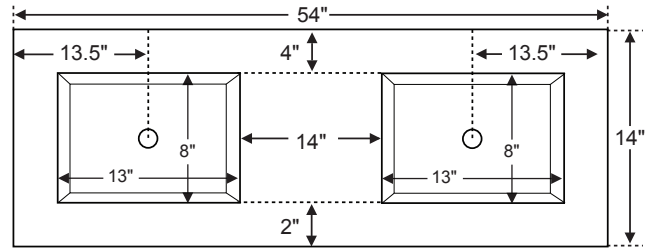
Drawings shown below are intended to simplify the ordering process. Using the worksheet on the previous page, choose a desired Vanity Sink length, then select 'Standard Bowl Placement' for length and/or depth. Enter specific measurements for custom bowl placement.

*Note: drawings below are not to scale.*

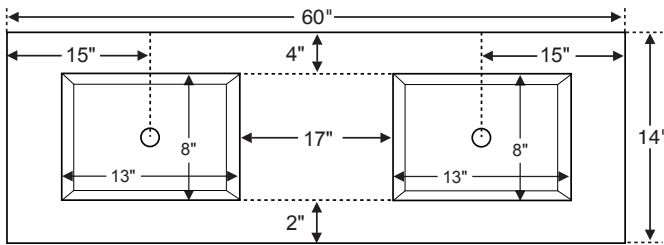
**48"**



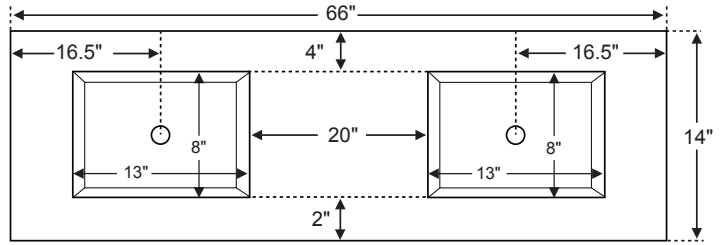
**54"**



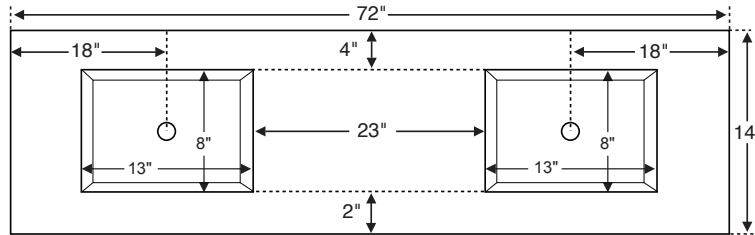
**60"**



**66"**



**72"**



Worksheet and order form must be filled out by an authorized MTI dealer.

# Vanity Sink Order Form

**Double Bowl** - Available in up to 5 standard lengths, depending on bowl selected, with fixed depth and height.  
Use **Worksheet** to specify bowl placement measurements.  
Pricing can be found on dealer price sheets.

Send this completed order form,  
along with worksheet and purchase order to:

**MTI Order Entry Department**  
Phone: 800-783-8827 Fax: 800-438-8827  
Email: orderentry@mtibaths.com

**Vanity Size** - Choose one of the following and enter price:

Length	Finish	Part #	Price
48"	Matte	CV-D48MT	
	Gloss	CV-D48GL	
54"	Matte	CV-D54MT	
	Gloss	CV-D54GL	
60"	Matte	CV-D60MT	
	Gloss	CV-D60GL	
66"	Matte	CV-D66MT	
	Gloss	CV-D66GL	
72"	Matte	CV-D72MT	
	Gloss	CV-D72GL	

**Double Bowl Models** - Choose one of the following and enter price:

Bowl name	Bowl size (rounded)	Fits vanity (size range)	Part #	Price
Petra 1	16" x 14"	48" to 72"	C801D	no charge
Petra 2	15" x 10"	48" to 72"	C802D	no charge
Petra 3	18" x 12"	48" to 72"	C803D	no charge
Petra 4	20" x 13"	54" to 72"	C804D	
<b>Petra 9</b>	<b>13" x 8"</b>	<b>48" to 72"</b>	<b>C809D</b>	<b>no charge</b>
Wymara 1	18" x 14"	48" to 72"	C821D	
Alissa	19" x 13"	48" to 72"	C841D	no charge
Halo 1	14" round	48" to 72"	C861D	no charge

## Required Information

Choose one from each group and enter price:

		Part #	Price
<b>Vanity Sink Style</b>	Waterfall	CWVS	
<b>Colors</b>	White	CWH	no charge
	Biscuit	CBI	no charge
<b>Integrated Overflow</b>	None	CION	no charge
	Rear bowl	CIOB	
<b>Faucet Holes</b>	None	CFHN	no charge
	Up to 6	CFH	

## Options and Accessories

		Part #	Price
<b>Backsplash</b> 4" (H) x 5/8" thick	48" length	CBSM	
	54" to 74" length	CBLG	
<b>Sidesplash</b> 4" (H) x 5/8" thick	Left	CSL	
	Right	CSR	
<b>Floating Shelf</b> See next page for overall dimensions of each size and a listing of compatible Vanity Sink sizes.	Small - matte	CFSSMT	
	Small - gloss	CFSSGL	
	Medium - matte	CFSMMT	
	Medium - gloss	CFSMGL	
	Large - matte	CFSLMT	
	Large - gloss	CFSLGL	
	X-Large - matte	CFSXLMT	
	X-Large - gloss	CFSXLGL	
<b>Teak Sink Tray</b>		CTKST	

## Available only in the Waterfall style

Due to the depth (14"), the Parson style is unavailable

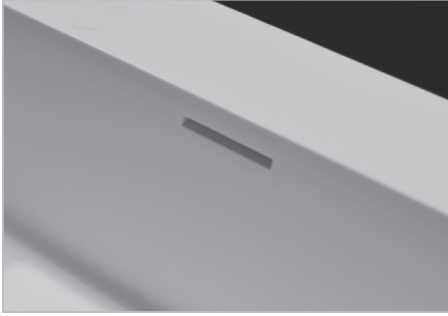


Finished appearance on left & right side of vanity.

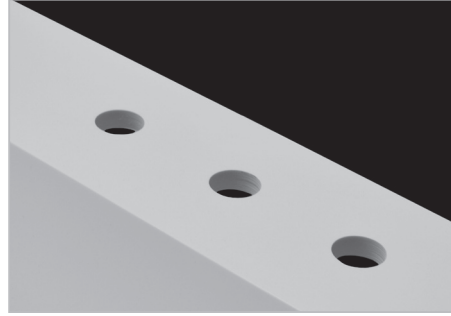
*Additional construction and options information:*

---

**Integrated overflow** can be installed on the inside back wall of sink.

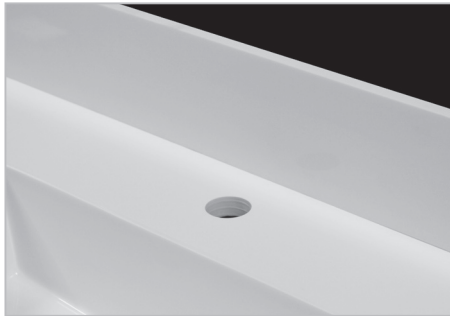


**Faucet Holes** - up to 6 drilled.  
Standard hole size is 1-3/8" in diameter.  
*Must provide specific drilling instructions on order form.*



---

**Backsplash / Sidesplash** measures 4" (H) and 5/8" thick.  
Field-installed on finished surface of vanity.



*Shown above with optional backsplash.*



*Shown above without a backsplash.*

---

**Floating Shelf** is available in four lengths: 24" (small), 30" (medium), 42" (large) and 48" (extra large). Each size measures 17" deep x 3" high and is open on the bottom side to accommodate mounting hardware (included). Wall-mounted floating shelf is designed to mount below the Vanity Sink. Shelf provides storage for towels, toiletries and a variety of bathroom accessories. *See ordering information below.*

**Ordering Information:**

- 24" shelf fits beneath Vanity Sink 36" and up.
- 30" shelf fits beneath Vanity Sink 42" and up.
- 42" shelf fits beneath Vanity Sink 54" and up.
- 48" shelf fits beneath Vanity Sink 60" and up.



---

**Teak Sink Tray** is an ideal Vanity Sink accessory, hand crafted to fit rectangular sink bowls. Both stylish and practical, the MTI teak sink tray can be used as a resting place for grooming articles and toiletries. Flat slatted teak design lets water and soap run through, so there is no residue build-up.

