

Worksheet and order form must be filled out by an authorized MTI dealer.

Petra Vanity Sink 9 Worksheet - Single Bowl

Center or Offset bowl location

Please fill in the information below:

P.O. _____ Date: _____

Contact name: _____

Company / Address: _____

Phone: _____ Fax: _____

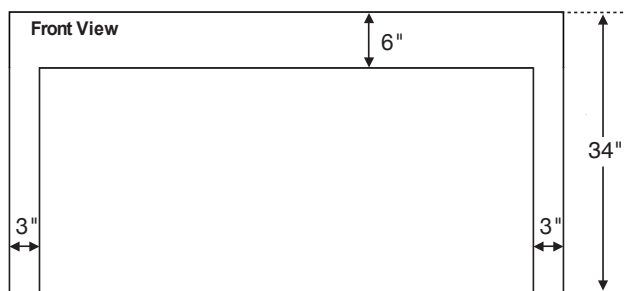
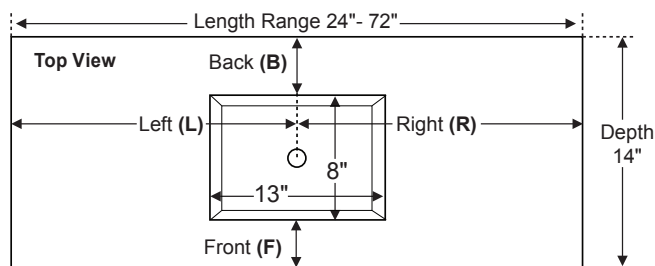
Email: _____

Send this completed worksheet,
along with order form and purchase order to:

MTI Order Entry Department
Phone: 800-783-8827 Fax: 800-438-8827
Email: orderentry@mtibaths.com

Worksheet Instructions:

- Vanity Sink is available in 9 standard lengths ranging between 24" and 72"
Enter exact size below. Custom lengths are not available.
- Overall height (34") and depth (14") are fixed and not customizable.
- Select whether faucet will be deck-mounted or wall-mounted.
NOTE: due to the 14" depth of this vanity, MTI recommends wall-mount faucets.
- For bowl placement, simply check "Centered on vanity" for both length
and depth. Or enter specific measurements for custom bowl placement.
- Send this worksheet, along with order form and purchase order to the MTI
order entry department.



**Note: Due to the handcrafted nature of this product,
please allow for a tolerance of up to 1/4" for overall
dimensions and 1/2" for bowl placement.**

Vanity Length *Enter a size listed below:*

_____ Choose from 24", 30", 36", 42", 48", 54", 60", 66" or 72".

Faucet Application *Choose one of the following:*

_____ Deck-Mount **OR** _____ Wall-Mount

NOTE: due to the depth of this vanity, MTI recommends wall-mount faucets.

Bowl Placement Measurements

Length - Choose 'Centered' **OR** enter measurements for Left (L) **AND** Right (R).

_____ **Centered on vanity**
OR
_____ inches (L) from left edge of vanity to center of bowl.
AND
_____ inches (R) from right edge of vanity to center of bowl.

Depth - Choose 'Centered' or enter a measurement from Back (B) **OR** Front (F).

_____ **Centered on vanity**
OR
_____ inches (B) from back edge of top to back edge of bowl.
OR
_____ inches (F) from front edge of top to front edge of bowl.

Distributor Signature _____

CSA Model # MTCS-V809

Effective 052316

©2016 by MTI Baths, Inc. Modification Rights Reserved.



Vanity Sink Order Form

Single Bowl - Available in up to 9 standard lengths, depending on bowl selected, with fixed depth and height. Use **Worksheet** to specify bowl placement measurements. Pricing can be found on dealer price sheets.

Send this completed order form, along with worksheet and purchase order to:

MTI Order Entry Department
 Phone: 800-783-8827 Fax: 800-438-8827
 Email: orderentry@mtibaths.com

Vanity Size

Length	Finish	Part #	Price
24"	Matte	CV-S24MT	
	Gloss	CV-S24GL	
30"	Matte	CV-S30MT	
	Gloss	CV-S30GL	
36"	Matte	CV-S36MT	
	Gloss	CV-S36GL	
42"	Matte	CV-S42MT	
	Gloss	CV-S42GL	
48"	Matte	CV-S48MT	
	Gloss	CV-S48GL	
54"	Matte	CV-S54MT	
	Gloss	CV-S54GL	
60"	Matte	CV-S60MT	
	Gloss	CV-S60GL	
66"	Matte	CV-S66MT	
	Gloss	CV-S66GL	
72"	Matte	CV-S72MT	
	Gloss	CV-S72GL	

Single Bowl Models

Bowl name	Bowl size (rounded)	Fits vanity (size range)	Part #	Price
Petra 1	16" x 14"	24" to 72"	C801S	no charge
Petra 2	15" x 10"	24" to 72"	C802S	no charge
Petra 3	18" x 12"	24" to 72"	C803S	no charge
Petra 4	20" x 13"	30" to 72"	C804S	
Petra 5	46" x 12"	54" to 72"	C805S	
Petra 6	46" x 12"	54" to 72"	C806S	
Petra 7	40" x 13"	48" to 72"	C807S	
Petra 8	40" x 13"	48" to 72"	C808S	
Petra 9	13" x 8"	24" to 72"	C809S	no charge
Wymara 1	18" x 14"	24" to 72"	C821S	no charge
Wymara 2	33" x 14"	42" to 72"	C822S	
Alissa	19" x 13"	24" to 72"	C841S	no charge
Halo 1	14" round	24" to 72"	C861S	no charge

Required Information

		Part #	Price
Vanity Sink Style	Waterfall	CWVS	
Colors	White	CWH	no charge
	Biscuit	CBI	no charge
Integrated Overflow	None	CION	no charge
	Rear bowl	CIOB	
Faucet Holes	None	CFHN	no charge
	Up to 3*	CFH	

Options and Accessories

		Part #	Price
Backsplash 4" (H) x 5/8" thick	24" to 48" length	CBSM	
	54" to 74" length	CBLG	
Sidesplash 4" (H) x 5/8" thick	Left	CSL	
	Right	CSR	
Floating Shelf See next page for overall dimensions of each size and a listing of compatible Vanity Sink sizes.	Small - matte	CFSSMT	
	Small - gloss	CFSSGL	
	Medium - matte	CFSMMT	
	Medium - gloss	CFSMGL	
	Large - matte	CFSLMT	
	Large - gloss	CFSLGL	
	X-Large - matte	CFSXLMT	
	X-Large - gloss	CFSXLGL	
Teak Sink Tray		CTKST	

Available only in the Waterfall style

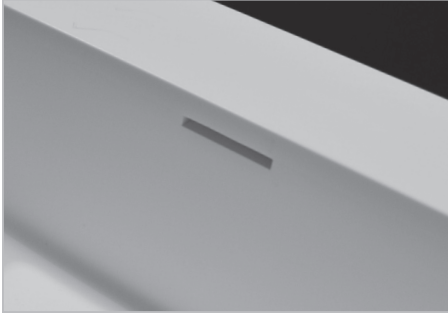
Due to the depth (14"), the Parson style is unavailable



Finished appearance on left & right side of vanity.

Additional construction and options information:

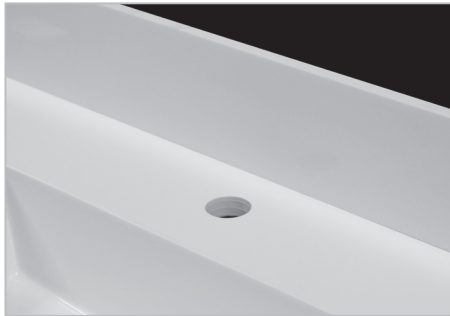
Integrated overflow can be installed on the inside back wall of sink.



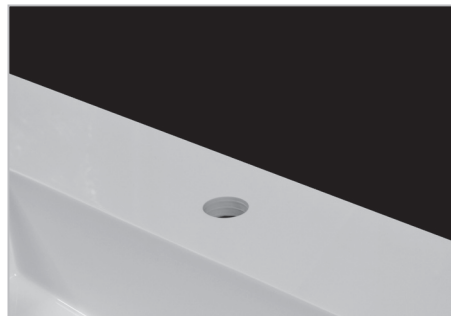
Faucet Holes - up to 3 drilled.
Standard hole size is 1-3/8" in diameter.
Must provide specific drilling instructions on order form.



Backsplash / Sidesplash measures 4" (H) and 5/8" thick.
Field-installed on finished surface of vanity.



Shown above with optional backsplash.



Shown above without a backsplash.

Floating Shelf is available in four lengths: 24" (small), 30" (medium), 42" (large) and 48" (extra large). Each size measures 17" deep x 3" high and is open on the bottom side to accommodate mounting hardware (included). Wall-mounted floating shelf is designed to mount below the Vanity Sink. Shelf provides storage for towels, toiletries and a variety of bathroom accessories. *See ordering information below.*

Ordering Information:

- 24" shelf fits beneath Vanity Sink 36" and up.
- 30" shelf fits beneath Vanity Sink 42" and up.
- 42" shelf fits beneath Vanity Sink 54" and up.
- 48" shelf fits beneath Vanity Sink 60" and up.



Teak Sink Tray is an ideal Vanity Sink accessory, hand crafted to fit rectangular sink bowls. Both stylish and practical, the MTI teak sink tray can be used as a resting place for grooming articles and toiletries. Flat slatted teak design lets water and soap run through, so there is no residue build-up.

