

# Petra Vanity Sink 9

## Worksheet - Double Bowl

Please fill in the information below:

PO: \_\_\_\_\_ Date: \_\_\_\_\_

Contact Name: \_\_\_\_\_

Company / Address: \_\_\_\_\_

Phone: \_\_\_\_\_ Fax: \_\_\_\_\_

Email: \_\_\_\_\_

Send this completed worksheet, along with order form and purchase order to:

**MTI Order Entry Department**

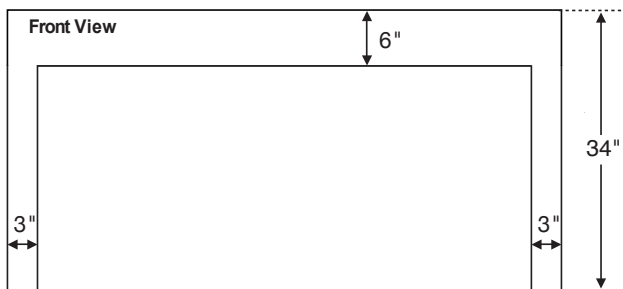
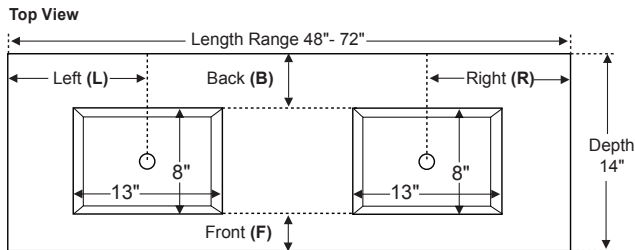
**Phone: 800-783-8827**

**Fax: 800-438-8827**

**Email: orderentry@mtibaths.com**

### WORKSHEET INSTRUCTIONS:

- Vanity Sink is available in 5 standard lengths ranging between 48" and 72". Enter exact size below. Custom lengths are not available.
- Overall height (34") and depth (14") are fixed and not customizable.
- Select whether faucet will be deck-mounted or wall-mounted.
- Enter specific bowl placement measurements for length and depth OR choose MTI's 'standard' recommended bowl placement. See next page to view 'standard' bowl placement drawings for each of the vanity lengths offered.
- Send this worksheet, along with order form and purchase order to the MTI order entry department.



**Note:** Due to the handcrafted nature of this product, please allow for a tolerance of up to 1/4" for overall dimensions and 1/2" for bowl placement.

**Vanity Length** - Enter a size listed below:

\_\_\_\_\_ Choose from: 48", 54", 60", 66", or 72"

**Faucet Application** - Choose one of the following:

\_\_\_\_\_ Deck-Mount **OR** \_\_\_\_\_ Wall-Mount

**Bowl Placement Measurements**

**Length** - Choose 'Standard'

**OR** enter measurements for Left (L) AND Right (R)

\_\_\_\_\_ Standard bowl placement. See drawings on next page.

**OR**

\_\_\_\_\_ Inches (L) from left edge of vanity to center of bowl.

**AND**

\_\_\_\_\_ Inches (R) from right edge of vanity to center of bowl.

**Depth** - Choose 'Standard'

**OR** enter a measurement from Back (B) **OR** Front (F).

\_\_\_\_\_ Standard bowl placement for deck-mount faucets. See drawings on next page.

**OR**

\_\_\_\_\_ Inches (B) from back edge of top to back edge of bowl.

**OR**

\_\_\_\_\_ Inches (F) from front edge of top to front edge of bowl.

**Distributor Signature** \_\_\_\_\_

**CSA Model #: MTCS-V809**



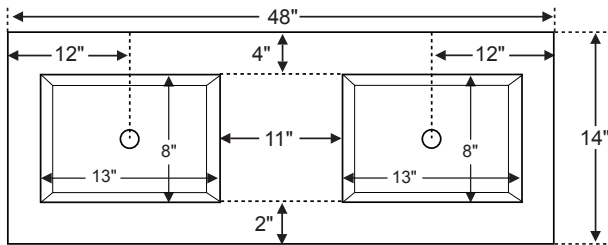
# Petra Vanity Sink 9

## Recommended bowl placement for sizes 48" to 72" (L)

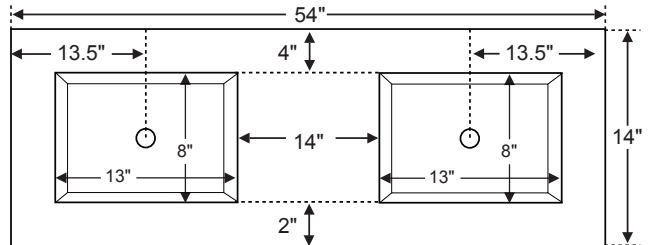
Drawings shown below are intended to simplify the ordering process. Using the worksheet on the previous page, choose a desired Vanity Sink length, then select 'Standard Bowl Placement' for length and/or depth. Enter specific measurements for custom bowl placements.

Note: drawings are not to scale.

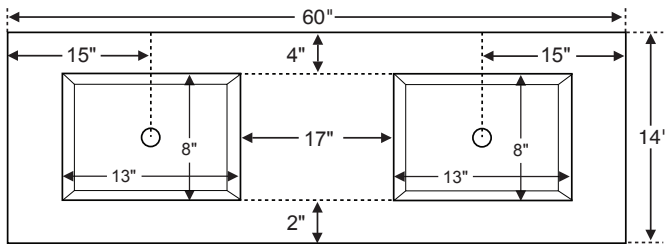
**48"**



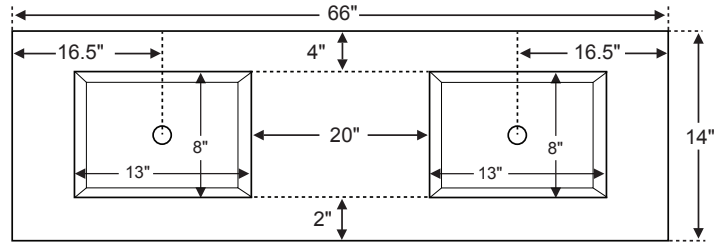
**54"**



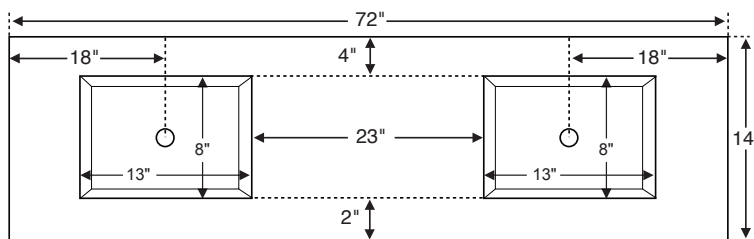
**60"**



**66"**



**72"**



# Vanity Sink Order Form

Worksheet and order form must be filled out by an authorized MTI dealer.

**Double Bowl** - Available in up to 5 standard lengths, depending on bowl selected, with fixed depth and height. Use the worksheet to specify bowl placement measurements.

## Vanity Size

Length	Finish	Part #	MSRP
48"	Matte	CV-D48MT	<b>\$5,565</b>
	Gloss	CV-D48GL	<b>\$6,905</b>
54"	Matte	CV-D54MT	<b>\$5,985</b>
	Gloss	CV-D54GL	<b>\$7,325</b>
60"	Matte	CV-D60MT	<b>\$6,265</b>
	Gloss	CV-D60GL	<b>\$7,705</b>
66"	Matte	CV-D66MT	<b>\$6,580</b>
	Gloss	CV-D66GL	<b>\$8,020</b>
72"	Matte	CV-D72MT	<b>\$6,790</b>
	Gloss	CV-D72GL	<b>\$8,335</b>

### Floating Shelf

See next page for overall dimensions of each size and a listing of compatible Vanity Sink sizes.

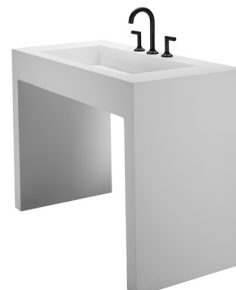
Required Information	Part #	MSRP	
Parsons Legs on 2 sides	CPVS2	no charge	
Parsons Legs on 1 side ( <i>Deduct</i> )	CPVS1	<b>-\$360</b>	
<b>Vanity Sink Style</b>	For 1 sided legs, specify Right or Left:		
Waterfall Design on 2 sides	CWVS2	<b>\$830</b>	
Waterfall Design on 1 side	CWVS1	<b>\$415</b>	
	For 1 sided Waterfall, specify Right or Left:		
<b>Colors</b>	White	CWH	no charge
	Biscuit	CBI	no charge
<b>Integrated Overflow</b>	None	CION	no charge
	Rear bowl (x2)	CIOB2	<b>\$440</b>
<b>Faucet Holes</b>	None	CFHN	no charge
	Up to 6	CFH	<b>\$75</b>

**Available vanity styles** - choose from one of the following:  
See "Required Information" above and make a selection.

**Parsons** - featuring four legs with vanity open on all sides.



**Waterfall** - finished appearance on left & right side of vanity.



## Double Bowl Models

\*Net Freight Adder applies

Bowl name	Bowl size (rounded)	Fits vanity (size range)	Part #	MSRP*
Petra 9	13" x 8"	48" to 72"	C809D	<b>NO CHARGE</b>

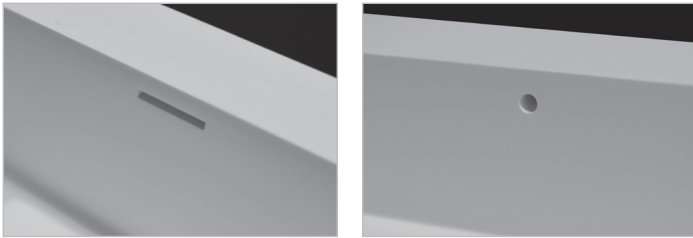
Options and Accessories	Part #	MSRP	
<b>Backsplash</b> 4" (H) x 5/8" thick	Up to 50" length	CBSM	<b>\$295</b>
	51" up to 72" length	CBLG	<b>\$400</b>
<b>Sidesplash</b> 4" (H) x 5/8" thick	Left	CSL	<b>\$180</b>
	Right	CSR	<b>\$180</b>
<b>Floating Shelf</b> See next page for overall dimensions and best fit	42" Large - matte	CFSLMT	<b>\$1,420</b>
	42" Large - gloss	CFSLGL	<b>\$1,815</b>
	48" X-Large - matte	CFSXLMT	<b>\$1,560</b>
	48" X-Large - gloss	CFSXLGL	<b>\$1,990</b>
<b>Waterfall Shelf</b> Not available with vanities with the Parsons Legs.	Up to 54" vanity - matte	CSSLMT	<b>\$1,420</b>
	Up to 54" vanity - gloss	CSSLGL	<b>\$1,870</b>
	Up to 72" vanity - matte	CSSXLMT	<b>\$1,560</b>
	Up to 72" vanity - gloss	CSSXLGL	<b>\$1,990</b>
<b>Waterfall Shelf with Teak Insert</b> Not available with vanities with the Parsons Legs.	Up to 54" vanity - matte	CTSLMT	<b>\$2,180</b>
	Up to 54" vanity - gloss	CTSLGL	<b>\$2,575</b>
	Up to 72" vanity - matte	CTSXLMT	<b>\$2,315</b>
	Up to 72" vanity - gloss	CTSXLGL	<b>\$2,745</b>
<b>Teak Sink Tray</b>	CTKST	<b>\$170</b>	



## Additional construction and options information

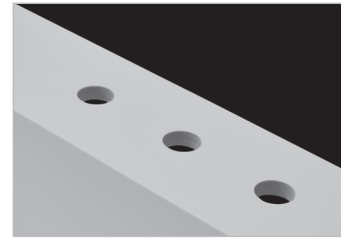
### Integrated overflow

Can be installed on the inside back wall of sink.



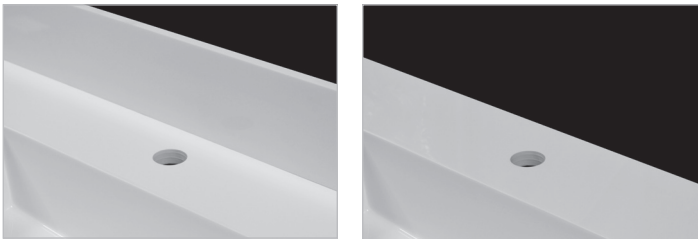
### Faucet Holes - up to 6 drilled.

Standard hole size is 1 $\frac{3}{8}$ " in diameter.  
Must provide specific drilling instructions on order form.



### Backsplash / Sidesplash

Measures 4" (H) and  $\frac{5}{8}$ " thick.  
Field-installed on finished surface of vanity.

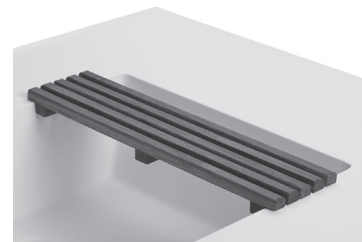


Shown above with optional  
backsplash.

Shown above without backsplash.

### Teak Sink Tray

An ideal Vanity Sink accessory, hand-crafted to fit rectangular sink bowls.  
Both stylish and practical, the MTI teak sink tray can be used as a resting  
place for grooming articles and toiletries. Flat slatted teak design lets water  
and soap run through, so there is no residue build-up.



### Floating Shelf

Available in 2 lengths with double vanities : 42" (large) and 48"  
(extra large). Each size measures 17" deep x 3" high and is open on  
the bottom side to accommodate mounting hardware (included). Wall-  
mounted floating shelf is designed to mount below the Vanity Sink.

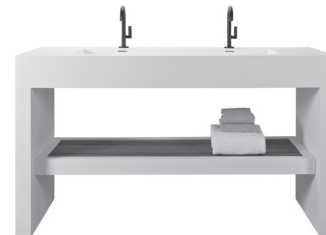
#### Ordering Information:

- 42" shelf fits Vanity Sink 54" and up.
- 48" shelf fits Vanity Sink 60" and up.



### Shelf for Waterfall Vanity

The Shelf for Waterfall Vanity is a full length shelf that is attached to either  
side of the Waterfall sides and measures 2" tall. Shelves can be ordered  
with a smooth top or with a genuine Teak Insert, and are also available in a  
Matte or Gloss finish. This is not available for vanities with the Parsons Legs.



### Half Vanity Option

Available for both the Parsons and Waterfall styles. This  
option allows you to choose to have one side of the vanity  
attached to the wall, and the other to be freestanding.

- Choose between right-hand or left-hand for the Parsons legs or  
Waterfall side.
- Can be ordered for Double Vanities ranging from 48" to 72".
- Hardware for attaching to wall is not included.



Waterfall Design on 1 side shown

