

Wymara Vanity Sink 1

Worksheet - Double Bowl

Please fill in the information below:

PO: _____ Date: _____

Contact Name: _____

Company / Address: _____

Phone: _____ Fax: _____

Email: _____

Send this completed worksheet, along with order form and purchase order to:

MTI Order Entry Department

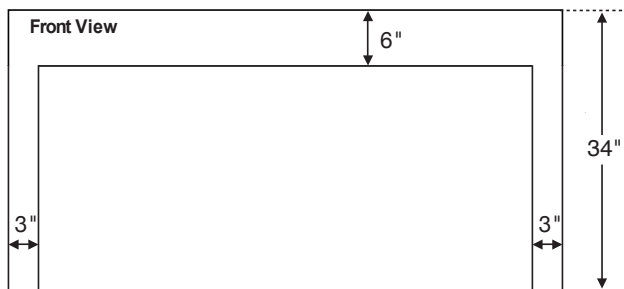
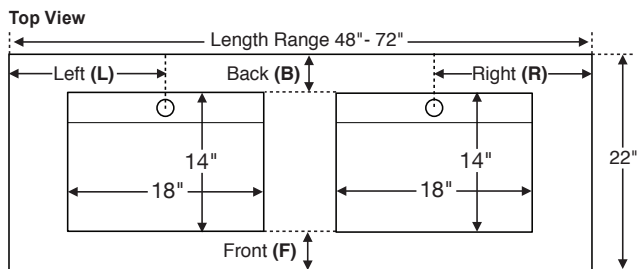
Phone: 800-783-8827

Fax: 800-438-8827

Email: orderentry@mtibaths.com

WORKSHEET INSTRUCTIONS:

- Vanity Sink is available in 5 standard lengths ranging between 48" and 72". Enter exact size below. Custom lengths are not available.
- Overall height (34") and depth (22") are fixed and not customizable.
- Select whether faucet will be deck-mounted or wall-mounted.
- Enter specific bowl placement measurements for length and depth OR choose MTI's 'standard' recommended bowl placement. See next page to view 'standard' bowl placement drawings for each of the vanity lengths offered.
- Send this worksheet, along with order form and purchase order to the MTI order entry department.



Note: Due to the handcrafted nature of this product, please allow for a tolerance of up to 1/4" for overall dimensions and 1/2" for bowl placement.

Vanity Length - Enter a size listed below:

_____ Choose from: 48", 54", 60", 66", or 72"

Faucet Application - Choose one of the following:

_____ Deck-Mount **OR** _____ Wall-Mount

Bowl Placement Measurements

Length - Choose 'Standard'
OR enter measurements for Left (L) AND Right (R)

_____ Standard bowl placement. See drawings on next page.

OR

_____ Inches (L) from left edge of vanity to center of bowl.

AND

_____ Inches (R) from right edge of vanity to center of bowl.

Depth - Choose 'Standard'
OR enter a measurement from Back (B) **OR** Front (F).

_____ Standard bowl placement for deck-mount faucets. See drawings on next page.

OR

_____ Inches (B) from back edge of top to back edge of bowl.

OR

_____ Inches (F) from front edge of top to front edge of bowl.

Distributor Signature _____

CSA Model #: MTCS-V821



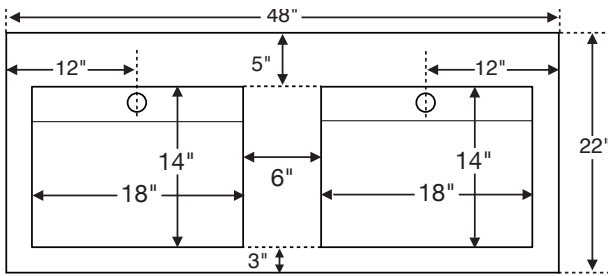
Wymara Vanity Sink 1

Recommended bowl placement for sizes 48" to 72" (L)

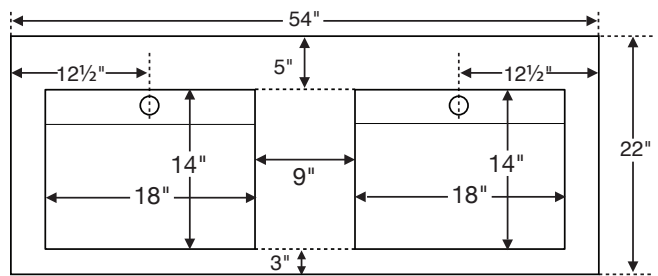
Drawings shown below are intended to simplify the ordering process. Using the worksheet on the previous page, choose a desired Vanity Sink length, then select 'Standard Bowl Placement' for length and/or depth. Enter specific measurements for custom bowl placements.

Note: drawings are not to scale.

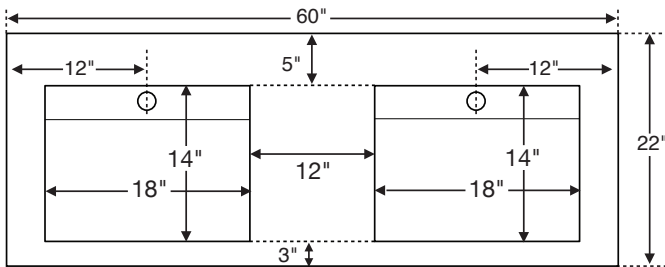
48"



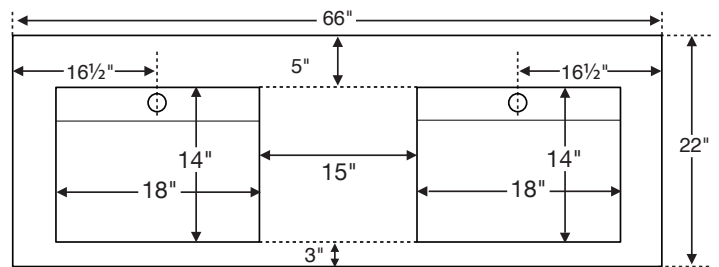
54"



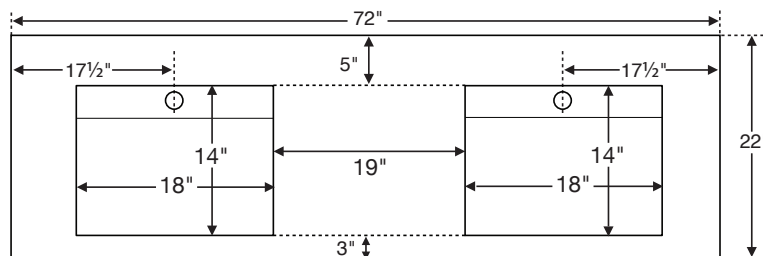
60"



66"



72"



Vanity Sink Order Form

Worksheet and order form must be filled out by an authorized MTI dealer.

Double Bowl - Available in up to 5 standard lengths, depending on bowl selected, with fixed depth and height. Use the worksheet to specify bowl placement measurements.

Vanity Size

Length	Finish	Part #	MSRP
48"	Matte	CV-D48MT	\$5,565
	Gloss	CV-D48GL	\$6,905
54"	Matte	CV-D54MT	\$5,985
	Gloss	CV-D54GL	\$7,325
60"	Matte	CV-D60MT	\$6,265
	Gloss	CV-D60GL	\$7,705
66"	Matte	CV-D66MT	\$6,580
	Gloss	CV-D66GL	\$8,020
72"	Matte	CV-D72MT	\$6,790
	Gloss	CV-D72GL	\$8,335

Floating Shelf

See next page for overall dimensions of each size and a listing of compatible Vanity Sink sizes.

Double Bowl Models

**Net Freight Adder applies*

Bowl name	Bowl size (rounded)	Fits vanity (size range)	Part #	MSRP*
Wymara 1	18" x 14"	48" to 72"	C821D	\$635

Options and Accessories		Part #	MSRP
Backsplash 4" (H) x 5/8" thick	Up to 50" length	CBSM	\$295
	51" up to 72" length	CBLG	\$400
Sidesplash 4" (H) x 5/8" thick	Left	CSL	\$180
	Right	CSR	\$180
Floating Shelf See next page for overall dimensions and best fit	42" Large - matte	CFSLMT	\$1,420
	42" Large - gloss	CFSLGL	\$1,815
	48" X-Large - matte	CFSXLMT	\$1,560
	48" X-Large - gloss	CFSXLGL	\$1,990
Waterfall Shelf Not available with vanities with the Parsons Legs.	Up to 54" vanity - matte	CSSLMT	\$1,420
	Up to 54" vanity - gloss	CSSLGL	\$1,870
	Up to 72" vanity - matte	CSSXLMT	\$1,560
	Up to 72" vanity - gloss	CSSXLGL	\$1,990
Waterfall Shelf with Teak Insert Not available with vanities with the Parsons Legs.	Up to 54" vanity - matte	CTSLMT	\$2,180
	Up to 54" vanity - gloss	CTSLGL	\$2,575
	Up to 72" vanity - matte	CTSXLMT	\$2,315
	Up to 72" vanity - gloss	CTSXLGL	\$2,745
Teak Sink Tray		CTKST	\$170

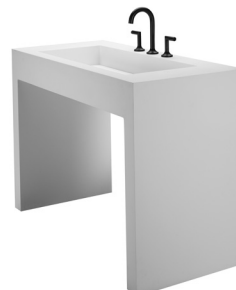
Required Information		Part #	MSRP
Vanity Sink Style	Parsons Legs on 2 sides	CPVS2	no charge
	Parsons Legs on 1 side (<i>Deduct</i>)	CPVS1	-\$360
	For 1 sided legs, specify Right or Left:		
	Waterfall Design on 2 sides	CWVS2	\$830
Colors	White	CWH	no charge
	Biscuit	CBI	no charge
Integrated Overflow	None	CION	no charge
	Rear bowl (x2)	CIOB2	\$440
Faucet Holes	None	CFHN	no charge
	Up to 6	CFH	\$75

Available vanity styles - choose from one of the following:
See "Required Information" above and make a selection.

Parsons - featuring four legs with vanity open on all sides.



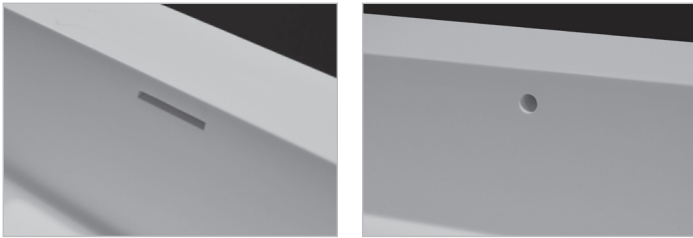
Waterfall - finished appearance on left & right side of vanity.



Additional construction and options information

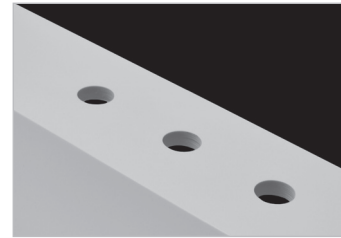
Integrated overflow

Can be installed on the inside back wall of sink.



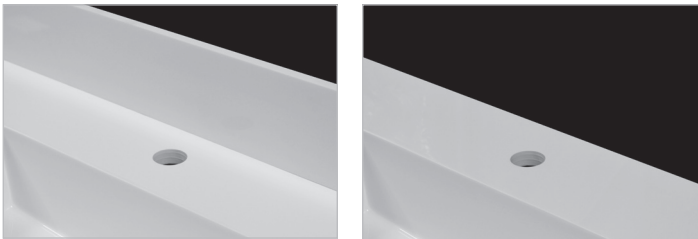
Faucet Holes - up to 6 drilled.

Standard hole size is 1 $\frac{3}{8}$ " in diameter.
Must provide specific drilling instructions on order form.



Backsplash / Sidesplash

Measures 4" (H) and $\frac{5}{8}$ " thick.
Field-installed on finished surface of vanity.

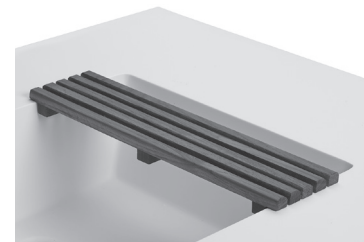


Shown above with optional
backsplash.

Shown above without backsplash.

Teak Sink Tray

An ideal Vanity Sink accessory, hand-crafted to fit rectangular sink bowls.
Both stylish and practical, the MTI teak sink tray can be used as a resting
place for grooming articles and toiletries. Flat slatted teak design lets water
and soap run through, so there is no residue build-up.



Floating Shelf

Available in 2 lengths with double vanities : 42" (large) and 48"
(extra large). Each size measures 17" deep x 3" high and is open on
the bottom side to accommodate mounting hardware (included). Wall-
mounted floating shelf is designed to mount below the Vanity Sink.

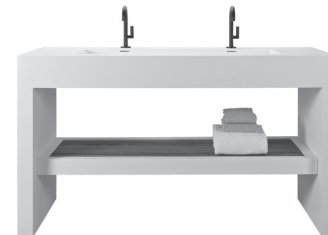
Ordering Information:

- 42" shelf fits Vanity Sink 54" and up.
- 48" shelf fits Vanity Sink 60" and up.



Shelf for Waterfall Vanity

The Shelf for Waterfall Vanity is a full length shelf that is attached to either
side of the Waterfall sides and measures 2" tall. Shelves can be ordered
with a smooth top or with a genuine Teak Insert, and are also available in a
Matte or Gloss finish. This is not available for vanities with the Parsons Legs.



Half Vanity Option

Available for both the Parsons and Waterfall styles. This
option allows you to choose to have one side of the vanity
attached to the wall, and the other to be freestanding.

- Choose between right-hand or left-hand for the Parsons legs or
Waterfall side.
- Can be ordered for Double Vanities ranging from 48" to 72".
- Hardware for attaching to wall is not included.



Waterfall Design on 1 side shown

