



# Akana 2

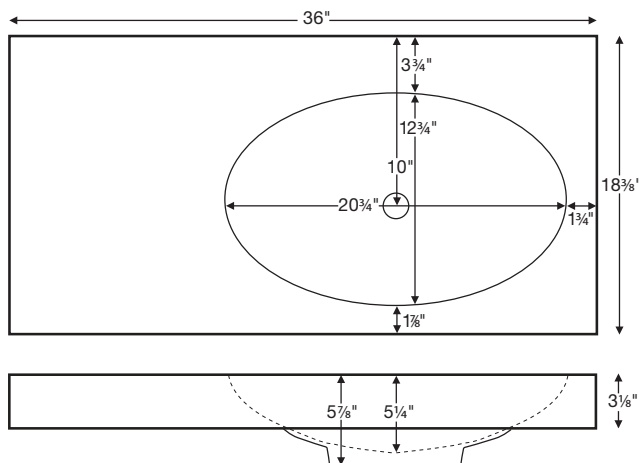
Model # MTCS-736

36" x 18.375" x 3.125" \*

\*NOTE: Standard exterior sink height is 3.125".  
Custom height available up to 6.625" - see drawings below.  
Must specify when ordering.

**Installation:** semi-recessed

**Lead Time - 10 Business Days**



NOTE: Measurements are  $\pm 1/2"$  and are subject to change without notice. Data herein supersedes all previous prior to publication date indicated below.

Sink Options and Pricing
NOTE: part codes for all options listed in parenthesis.
<b>Part #: MTCS-736 - \$1,105</b>
<b>Standard Color</b> - White, matte finish <b>Biscuit Color Upgrade, matte finish</b> - (SSBISNK) <b>\$100</b>
<b>Optional Gloss Finish Upcharge</b> - For White or Biscuit (SSGLOSSNK) <b>\$205</b> Additional material colors available for projects only. Please call MTI.
<b>Quick Ship</b> - reduces lead time - please call for availability (QUISINKSH) <b>\$185</b>
<b>Integrated Overflow</b> - (SINKIO) no charge front installation only

Options and Accessories
NOTE: part codes for all options listed in parenthesis.
<b>Drain Kits -</b>
<b>Finger Touch Drain With Overflow</b> Chrome (DKFGC) <b>\$100</b> Brushed Nickel (DKFGBN) <b>\$105</b>
<b>Finger Touch Drain Without Overflow</b> Chrome (DKFGCN) <b>\$100</b> Brushed Nickel (DKFGBNN) <b>\$105</b>
<b>Grid Drain With Overflow</b> Chrome (DKGDC) <b>\$85</b> Brushed Nickel (DKGDBN) <b>\$100</b>
<b>Grid Drain Without Overflow</b> Chrome (DKGDCN) <b>\$85</b> Brushed Nickel (DKGDBNN) <b>\$100</b>
<b>Fixed Drain Without Overflow</b> Chrome (DKFDC) <b>\$185</b>

## CONSTRUCTION AND STANDARD FEATURES

- Single-bowl design; 1.5" drain opening.
- Sink has no overflow. Requires vessel-style drain kit without overflow. Check local codes.
- No holes drilled standard; up to 3 holes drilled by MTI at no additional charge.
- Extended deck ledge for toiletries.
- Left- or right-hand bowl available. Must specify when ordering.
- One-piece construction using Engineered Solid Stone (ESS) material, which is solid through and through.
- ESS is a mixture of ground natural materials and binding agents that are liquefied, poured and then hardened.
- This material is non-porous, stain-, mold- and mildew-resistant, making cleaning and maintenance easy.
- Approximately 65% of the material is organic, including minerals mined from the earth, making it "Green".
- Same material and color all the way through, with minor variations due to use of natural minerals.
- Five-Year Limited Residential Warranty.
- Shipping weight: 52 lbs.