

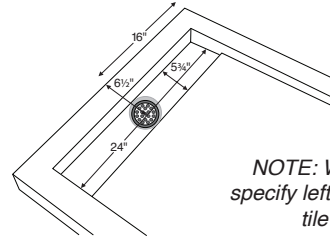
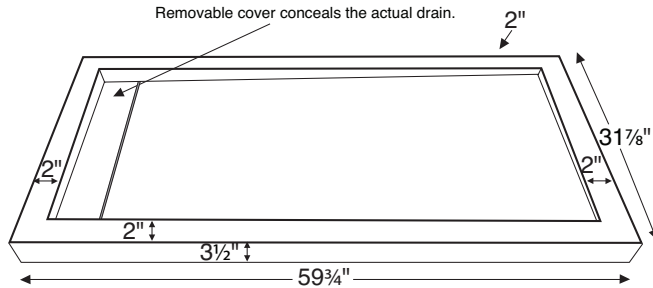


Shown with standard Stainless Steel Hidden Drain Cover.

MTSB-6032MTHD

59.75" x 31.875" x 3.5"

Low-profile, Multiple Threshold
End Drain / Rectangle



NOTE: When ordering, please specify left- or right-hand drain and tile flange locations.

Shower Base

Standard Colors: Part # SB6032MTHD **\$1,555** Choose from:

White (CWH), Bone (CBN), Biscuit (CBS)

Other Colors: Part # SB6032MTHDGRP1 **\$1,780** Choose from:

Black (CBL), Sterling Silver (CSS)

Quick Ship/Priority - reduces lead time (QSPRI) Call for availability. **\$370**

Options

Drain Kit

PVC (included with shower base); Solid Brass (SBDKSB) **\$180**

Hidden Drain Cover

Stainless Steel (standard with any color shower base)

Powder Coated - White* (DCH32W) No charge upgrade

*Available for white shower bases only (must specify on order)

Pre-Levelled Foam Base (PLFSB) **\$155** see p. E-71

Radiance® - shower floor heating system(RAD100) **\$1,050**

Radiance heating grids are fully integrated within the acrylic shell structure of the shower floor. Requires a 110-volt, 15 amp GFCI and remote installation of control box & keypad. For complete information, see p. E-72 or visit mtibaths.com.

Accessories - see pp. E-73-E-79

Teak Shower Seat -

Premium - Natural Stainless (TK-SSEAT2416BNS) **\$2,270**

- High-Polished Stainless (TK-SSEAT2416BHP) **\$2,625**

Standard - Natural Stainless (TK-SSEAT2215NS) **\$840**

- High-Polished Stainless (TK-SSEAT2215HP) **\$1,160**

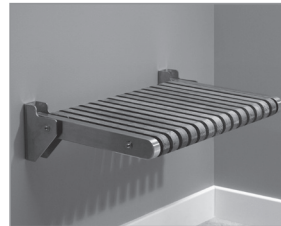
Teak Hidden Drain Cover (TK-HD32) **\$180**

Teak Bath Mat (TK-MAT3018) (custom sizes also available) **\$410**

Shower Niche - constructed of Engineered Solid Stone (ESS)

Matte Finish - White (SSNWHMT) or Biscuit (SSNBSMT) **\$460**

Gloss Finish - White (SSNWHGL) or Biscuit (SSNBSGL) **\$615**



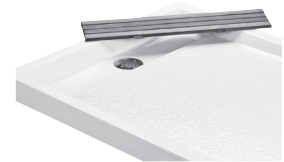
Premium teak seat
Size 24" x 16"



Standard teak seat
Size 22" x 15"



Teak bath mat



Teak hidden drain cover



Shower niche

CONSTRUCTION AND STANDARD FEATURES

- Multiple threshold design; engineered with a concealed drain.
- 3.5" drain opening pre-drilled.
- Stainless steel hidden drain cover is included. Also available powder coated in white and in teak (see options above)
- Hidden drain cover is removable for drain access.
- Low-profile, narrow threshold and shallow pan.
- Factory-installed tile flange on 1, 2 or 3 sides to facilitate installation. PLEASE SPECIFY WHICH SIDES WHEN ORDERING.
- Durable Lucite® cast acrylic shell is extremely scratch- and stain-resistant, yet renewable because the color goes all the way through the material.

- Textured bottom that meets ASTM F-462-1994 certification requirements for safer showering.
- Non-porous surface makes cleaning and sanitizing faster and more effective.
- Multi-layered backing of thick fiberglass / resin / titanium encloses wood reinforcement to prevent flexing of floor pan.
- At least 30% thicker and stronger than other makes.
- Lead time - 5 business days.
- 10-year Limited Residential Warranty.
- Shipping Weight: 100 lbs

SHOWER BASE INSTALLATION: Add bedding compound to fully support bottom of shower base. MTI's optional Pre-Levelled Foam Base requires no additional bedding compound or support. See installation instructions. Measurements are $\pm 1/2"$ and are subject to change without notice. Data herein supersedes all previous prior to publication date indicated below.