

Worksheet and order form must be filled out by an authorized MTI dealer.

# Petra Vanity Sink 3 Worksheet Single Bowl

Center or Offset bowl location

Please fill in the information below:

P.O. \_\_\_\_\_ Date: \_\_\_\_\_

Contact name: \_\_\_\_\_

Company / Address: \_\_\_\_\_

Phone: \_\_\_\_\_ Fax: \_\_\_\_\_

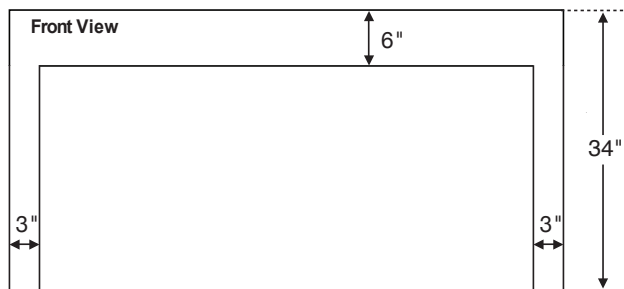
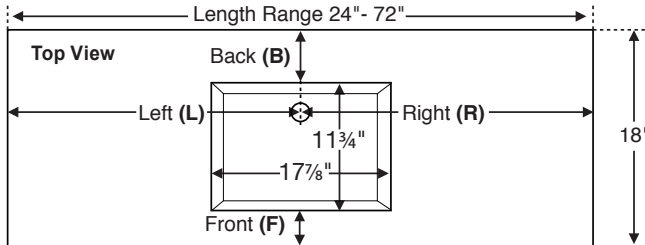
Email: \_\_\_\_\_

Send this completed worksheet,  
along with order form and purchase order to:

**MTI Order Entry Department**  
Phone: 800-783-8827 Fax: 800-438-8827  
Email: orderentry@mtibaths.com

### Worksheet Instructions:

- Vanity Sink is available in 9 standard lengths ranging between 24" and 72". Enter exact size below. Custom lengths are not available.
- Overall height (34") and depth (22") are fixed and not customizable.
- Select whether faucet will be deck-mounted or wall-mounted.
- Bowl placement options: For length, choose 'centered' or enter specific measurements For depth, select MTI's 'standard' recommended bowl placement for deck-mounted faucet applications, or enter specific measurements.
- Send this worksheet, along with order form and purchase order to the MTI order entry department.



**Note: Due to the handcrafted nature of this product, please allow for a tolerance of up to 1/4" for overall dimensions and 1/2" for bowl placement.**

### Vanity Length *Enter a size listed below:*

\_\_\_\_\_ Sizes: 24", 30", 36", 42", 48", 54", 60", 66", 72"

### Faucet Application *Choose one of the following:*

\_\_\_\_\_ Deck-Mount **OR** \_\_\_\_\_ Wall-Mount  
*NOTE: due to the depth of this vanity, MTI recommends wall-mount faucets.*

### Bowl Placement Measurements

**Length** - Choose 'Centered' **OR** enter measurements for Left (L) **OR** Right (R).

\_\_\_\_\_ Centered on vanity. **OR**  
 \_\_\_\_\_ inches (L) from left edge of vanity to center of bowl.  
**OR**  
 \_\_\_\_\_ inches (R) from right edge of vanity to center of bowl.

**Depth** - Choose 'Standard' or enter a measurement from Back (B) **OR** Front (F).

\_\_\_\_\_ Standard bowl placement for deck-mounted faucets.  
**OR**  
 \_\_\_\_\_ inches (B) from back edge of top to back edge of bowl.  
**OR**  
 \_\_\_\_\_ inches (F) from front edge of top to front edge of bowl.

Distributor Signature \_\_\_\_\_

CSA Model # MTCS-V803

Effective 052016

©2016 by MTI Baths, Inc. Modification Rights Reserved.



# Vanity Sink Order Form

**Single Bowl** - Available in up to 9 standard lengths, depending on bowl selected, with fixed depth and height. Use **Worksheet** to specify bowl placement measurements. Pricing can be found on dealer price sheets.

Send this completed order form, along with worksheet and purchase order to:

**MTI Order Entry Department**  
 Phone: 800-783-8827 Fax: 800-438-8827  
 Email: orderentry@mtibaths.com

## Vanity Size

Length	Finish	Part #	Price
24"	Matte	CV-S24MT	
	Gloss	CV-S24GL	
30"	Matte	CV-S30MT	
	Gloss	CV-S30GL	
36"	Matte	CV-S36MT	
	Gloss	CV-S36GL	
42"	Matte	CV-S42MT	
	Gloss	CV-S42GL	
48"	Matte	CV-S48MT	
	Gloss	CV-S48GL	
54"	Matte	CV-S54MT	
	Gloss	CV-S54GL	
60"	Matte	CV-S60MT	
	Gloss	CV-S60GL	
66"	Matte	CV-S66MT	
	Gloss	CV-S66GL	
72"	Matte	CV-S72MT	
	Gloss	CV-S72GL	

## Single Bowl Models

Bowl name	Bowl size (rounded)	Fits vanity (size range)	Part #	Price
Petra 1	16" x 14"	24" to 72"	C801S	no charge
Petra 2	15" x 10"	24" to 72"	C802S	no charge
<b>Petra 3</b>	<b>18" x 12"</b>	<b>24" to 72"</b>	<b>C803S</b>	<b>no charge</b>
Petra 4	20" x 13"	30" to 72"	C804S	
Petra 5	46" x 12"	54" to 72"	C805S	
Petra 6	46" x 12"	54" to 72"	C806S	
Petra 7	40" x 13"	48" to 72"	C807S	
Petra 8	40" x 13"	48" to 72"	C808S	
Petra 9	13" x 8"	24" to 72"	C809S	
Wymara 1	18" x 14"	24" to 72"	C821S	no charge
Wymara 2	33" x 14"	42" to 72"	C822S	
Alissa	19" x 13"	24" to 72"	C841S	no charge
Halo 1	14" round	24" to 72"	C861S	no charge

## Required Information

	Part #	Price	
<b>Vanity Sink Style</b>	Parsons	CPVS	no charge
	Waterfall	CWVS	
<b>Colors</b>	White	CWH	no charge
	Biscuit	CBI	no charge
<b>Integrated Overflow</b>	None	CION	no charge
	Rear bowl	CIOB	
<b>Faucet Holes</b>	None	CFHN	no charge
	Up to 3*	CFH	

## Options and Accessories

	Part #	Price	
<b>Backsplash</b> 4" (H) x 5/8" thick	24" to 48" length	CBSM	
	54" to 74" length	CBLG	
<b>Sidesplash</b> 4" (H) x 5/8" thick	Left	CSL	
	Right	CSR	
<b>Floating Shelf</b> See next page for overall dimensions of each size and a listing of compatible Vanity Sink sizes.	Small - matte	CFSSMT	
	Small - gloss	CFSSGL	
	Medium - matte	CFSMMT	
	Medium - gloss	CFSMGL	
	Large - matte	CFSLMT	
	Large - gloss	CFSLGL	
	X-Large - matte	CFSXLMT	
	X-Large - gloss	CFSXLGL	
<b>Teak Sink Tray</b>	CTKST		

**Available vanity styles** - choose from one of the following: See "Required Information" to the left and make a selection.

**Parsons** - featuring four legs with vanity open on all sides.



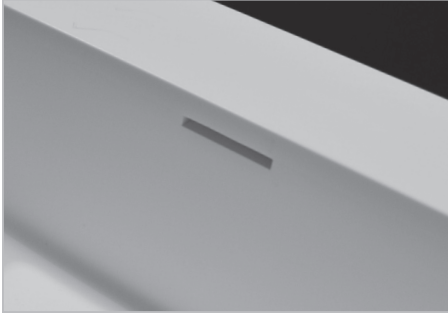
**Waterfall** - finished appearance on left & right side of vanity.



*Additional construction and options information:*

---

**Integrated overflow** can be installed on the inside back wall of sink.

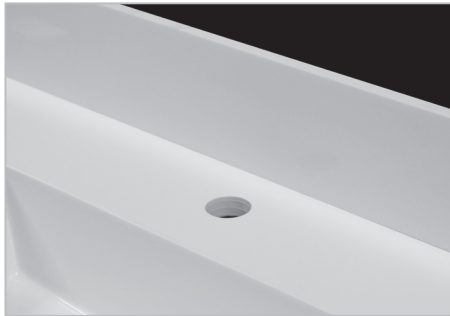


**Faucet Holes** - up to 3 drilled.  
Standard hole size is 1-3/8" in diameter.  
*Must provide specific drilling instructions on order form.*

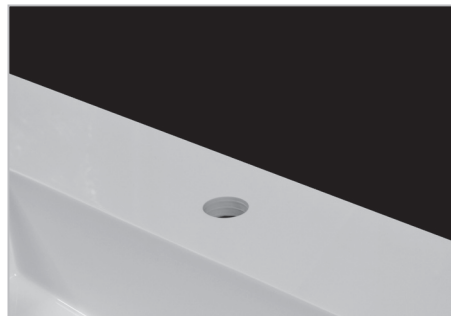


---

**Backsplash / Sidesplash** measures 4" (H) and 5/8" thick.  
Field-installed on finished surface of vanity.



*Shown above with optional backsplash.*



*Shown above without a backsplash.*

---

**Floating Shelf** is available in four lengths: 24" (small), 30" (medium), 42" (large) and 48" (extra large). Each size measures 17" deep x 3" high and is open on the bottom side to accommodate mounting hardware (included). Wall-mounted floating shelf is designed to mount below the Vanity Sink. Shelf provides storage for towels, toiletries and a variety of bathroom accessories. *See ordering information below.*

**Ordering Information:**

- 24" shelf fits beneath Vanity Sink 36" and up.
- 30" shelf fits beneath Vanity Sink 42" and up.
- 42" shelf fits beneath Vanity Sink 54" and up.
- 48" shelf fits beneath Vanity Sink 60" and up.



---

**Teak Sink Tray** is an ideal Vanity Sink accessory, hand crafted to fit rectangular sink bowls. Both stylish and practical, the MTI teak sink tray can be used as a resting place for grooming articles and toiletries. Flat slatted teak design lets water and soap run through, so there is no residue build-up.

