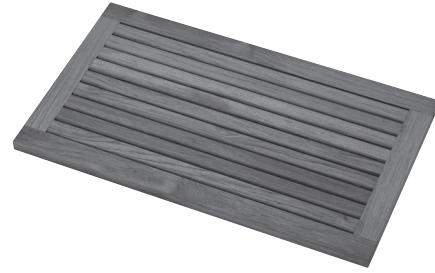


Teak Bath Mat - Part # TK-MAT3018 \$395

Size: 30" x 17.5" x 1"

- Slats are spaced only 1/8" apart to ensure a comfortable, safe surface for feet.
- Slats are 1-1/2" wide x 1/2" thick and are permanently joined to 2" wide x 1" thick support boards with glue and countersunk marine-grade stainless steel screws.

Custom sizes also available. Call MTI for pricing.



Teak Tub Tray - 2 styles available:

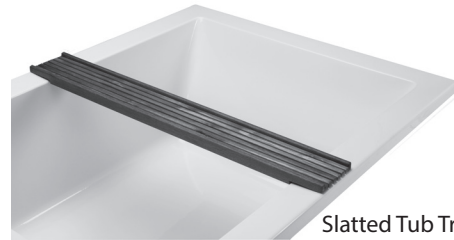
Slatted - Part # TK-TRAY1 \$395

Solid - Part # TK-TRAY2 \$395

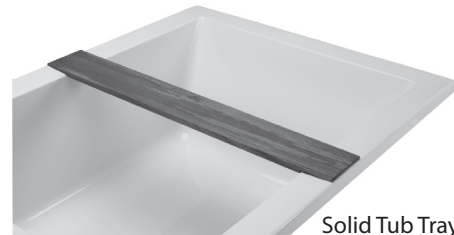
- Ideal surface for holding a book or beverage or bath accessories.
- Both styles fit tubs up to 48" wide.
- Custom fit for many MTI bathtubs. See individual tub specification sheets for availability.

NOTE: Must specify MTI tub model on order, if ordered separately.

Custom sizes also available. Call MTI for pricing.



Slatted Tub Tray

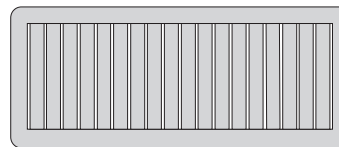
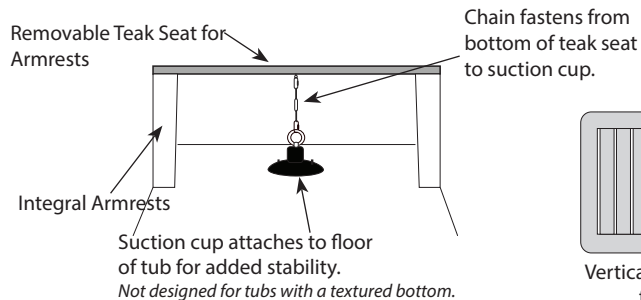


Solid Tub Tray

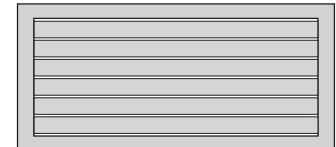
Teak Seat for Tubs with Armrests - Part # TK-REMTSEAT \$395

- Custom fit for various MTI tub models with flat integral armrests.
- Slats are 1-3/8" wide x 1/2" thick and joined to the 3/4" x 3/4" support boards with glue and countersunk marine-grade stainless steel screws.
- Simple to install and remove; includes suction cup and chain fasteners for secure mounting.

NOTE: Suction cup will not work on tubs ordered with a textured bottom.



Vertical teak slat arrangement is used for tubs 38" wide and up.



Horizontal teak slat arrangement is used for tubs up to 37" wide.

Teak Accessories Construction and Standard Features

- Smooth, durable teak combines beauty with practicality.
- Constructed of the finest grade of Genuine Teak* (see note at bottom of page).
- Teak has the natural ability to ward off fungi, mold and mildew.
- Teak is inherently slip-resistant.
- Unsurpassed quality and workmanship.
- Handcrafted and milled in the USA.
- Custom sizes are also available. Call MTI for a quote.

*Environmentally Responsible

MTI uses only 100% U.S.-certified legal, reclaimed, sustainable teak. A replacement tree is planted 20 years before a tree is harvested. The teak used in MTI products is the finest in the world and is imported from reputable suppliers bordering Burma (Myanmar), not from Burma. MTI suppliers observe all international laws regarding labor and conservation. All of the Genuine Teak used by MTI is harvested from reclaimed forests and is absolutely not endangering or depleting rain forests.